



IMA SCHELLING GROUP



Factory Refurbished Advantage 500L Demo Machine

Specifications for machine #50329:

- Single-sided edgebander for EVA glue
- Joint-milling, gluing unit with double coil magazine, top pressure mounted end trimming, pre/flush-trimming, corner rounding, profile- and glue scraper, buffing and smoothing units
- Tooling: Multi Milling Unit, 2mm corner rounding unit
- Edgeband capabilities: 0.5 to 3mm coiled edgebanding
- Min edge tape height: 12mm
- Max edge tape height: 65mm
- Min panel thickness: 8mm
- Max panel thickness: 60mm
- Smallest workpiece: 65mm x 150mm (at max panel thickness of 25mm)
- Processing speed: 14-20m/min
- Working height: 900mm



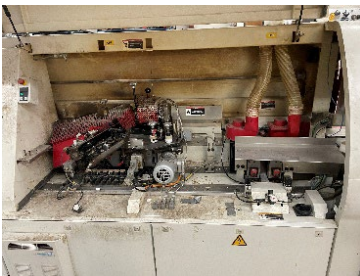


IMA SCHELLING
GROUP

IMA Schelling Certified

Step 1: Incoming Cleaning and Assessment

Once a machine arrives in our Rebuild Center, we conduct a thorough cleaning and evaluate the condition of all components.



Step 2: Assembly and Repairs

Factory-trained technicians assemble the machines and make repairs using genuine replacement parts.

Step 3: Restoration to Original Factory Specifications

Machine is restored to original appearance and performance capability. Equipment is calibrated and thoroughly tested to ensure full functionality to original factory specifications.



Step 4: Certification and Warranty

Every IMA Schelling Certified refurbished machine comes with a six month warranty.

