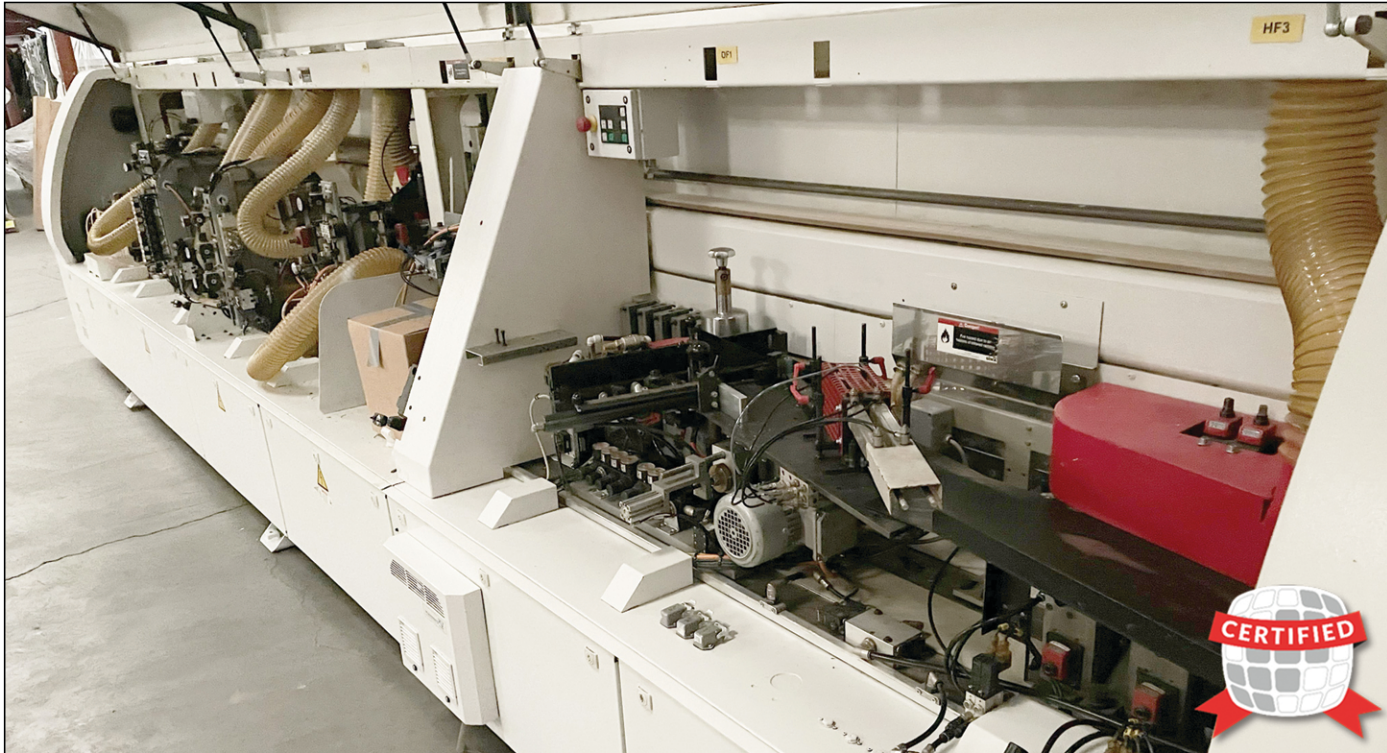




**IMA SCHELLING**  
GROUP



## **IMA Advantage 500L Edgebander**

Machine #50278

### **Key Features**

- **Tooling:** Multi Milling Unit, 2 mm corner rounding unit
- **Edgeband Capabilities:** 0.5 mm - 3 mm coiled edgebanding
- **Edging Strips and Lipping:** 3 mm - 20 mm
- **Minimum Edge Tape Height:** 12 mm
- **Maximum Edge Tape Height:** 65 mm
- **Minimum Panel Thickness:** 8 mm
- **Maximum Panel Thickness:** 60 mm
- **Smallest Workpiece** 65 mm x 150 mm (at max panel thickness of 25 mm)
- **Processing Speed:** 14 - 20 m/min
- **Working height:** 900 mm
  
- **Operating Voltage:** 3PE 60Hz 480V
- **Rated Power:** 18 kW
- **Nominal Current:** 39A
- **Compressed Air:** 7-8 bar



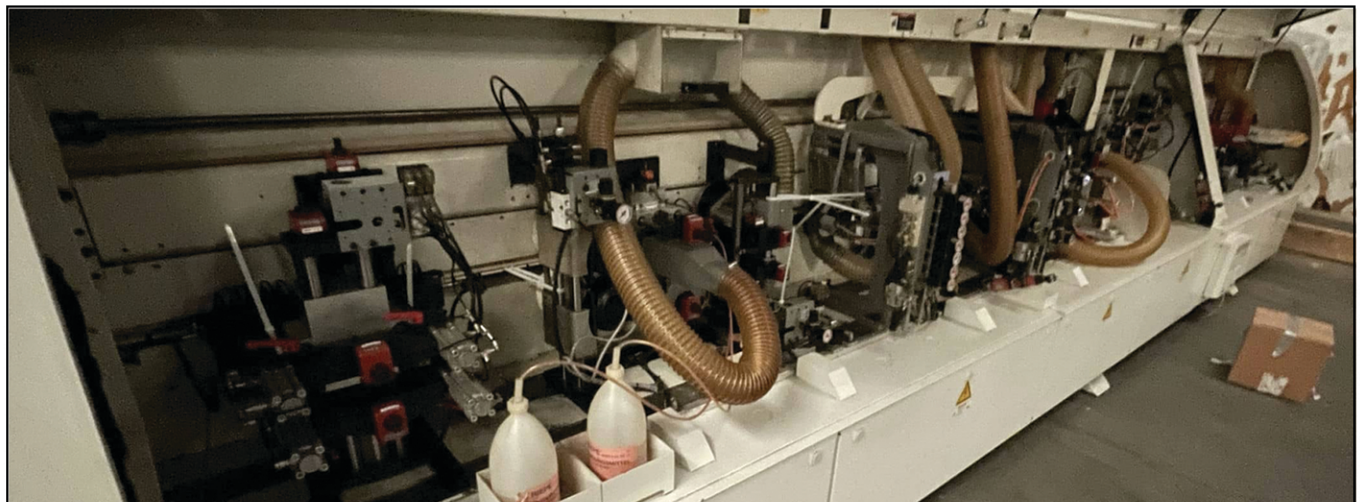
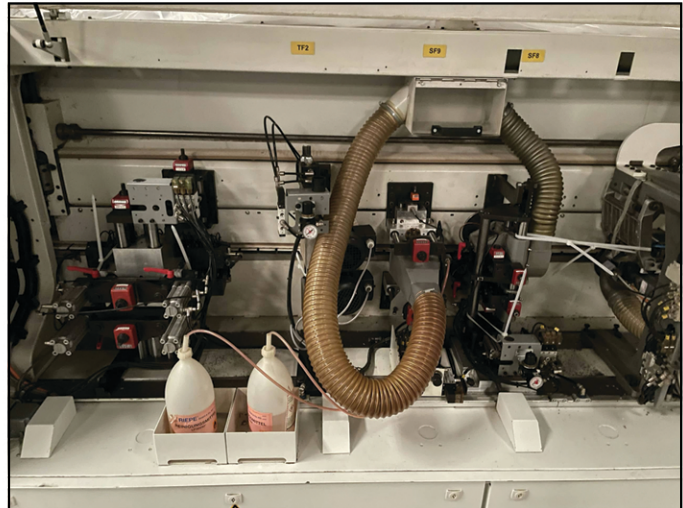
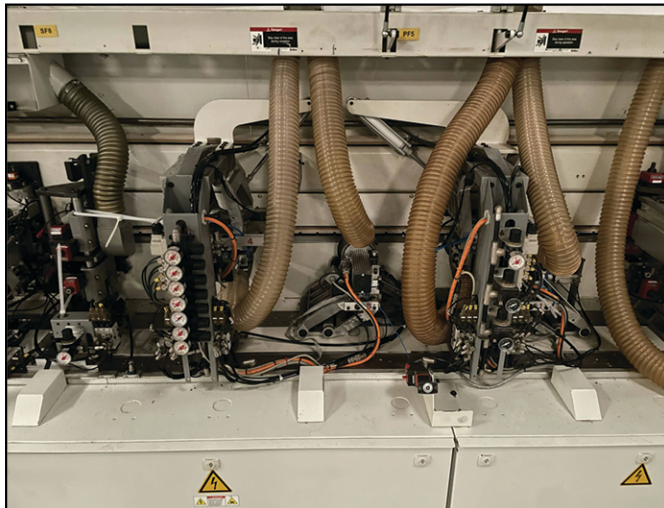
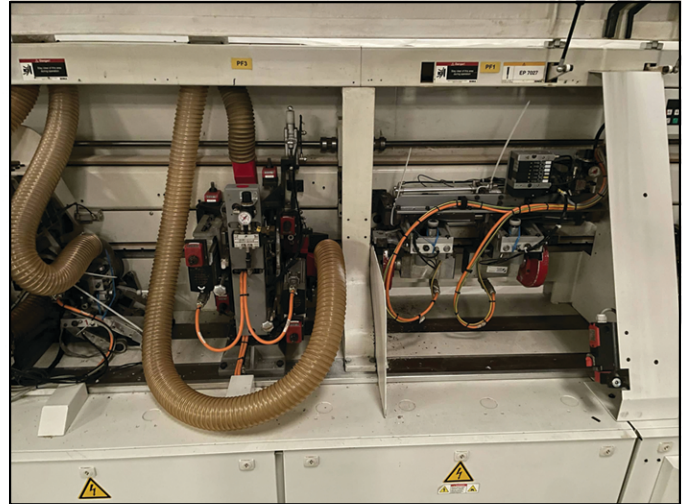
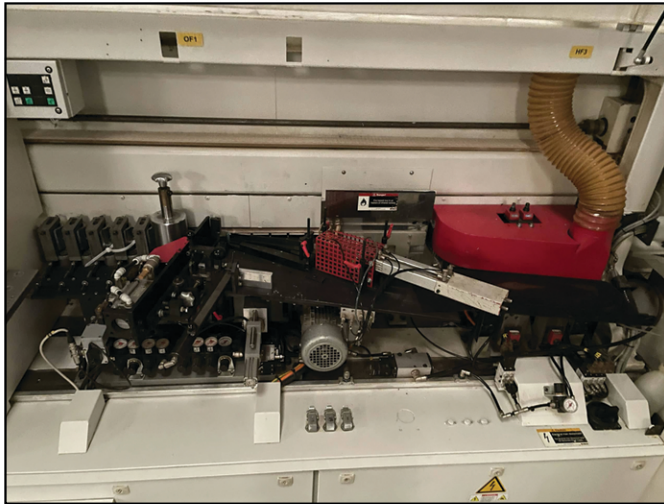




**IMA SCHELLING**  
GROUP

# IMA Advantage 500L Edgebander

Machine #50278







**IMA SCHELLING**  
GROUP

## **Factory-Certified Refurbished Machines**

### **Step 1: Incoming Cleaning and Assessment**

Once a machine arrives in our Rebuild Center, we conduct a thorough cleaning and evaluate the condition of all components.

### **Step 2: Assembly and Repairs**

Factory-trained technicians assemble the machines and make repairs using genuine IMA and Schelling replacement parts.

### **Step 3: Restoration to Original Factory Specifications**

The machine is restored to its original appearance and performance capability. Equipment is calibrated and thoroughly tested to ensure full functionality to original factory specifications.

### **Step 4: Certification and Warranty**

Every IMA Schelling USA factory-certified refurbished machine comes with a six-month warranty.

